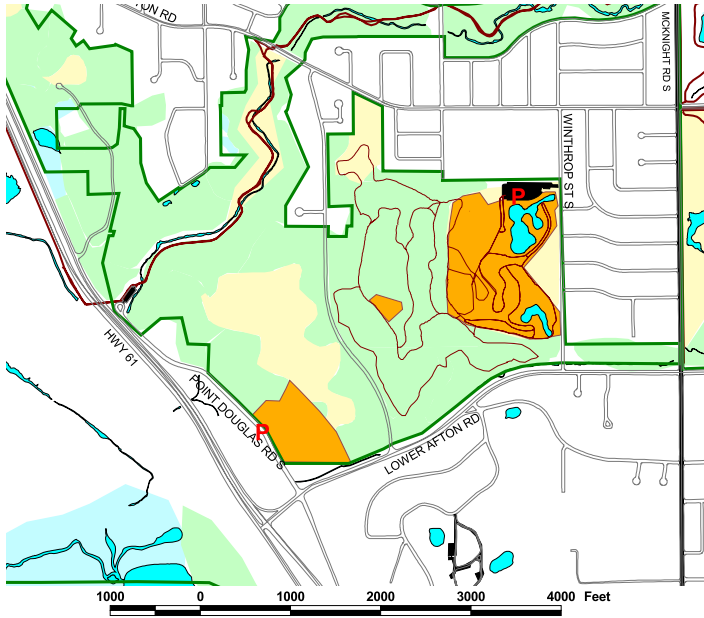


## Battle Creek West



**LOCATION:** The western portion of Battle Creek Regional Park is located in St. Paul. It is bounded by Upper Afton on the north and Lower Afton on the South. Winthrop Street is the east boundary and Hwy. 61 the west. Parking is located at the Battle Creek Recreation Center on Winthrop, along Battle Creek Road in the center of the park and on Pt. Douglas Rd. From Hwy. 61 take Lower Afton Rd. to the east. Turn north onto any of the three previously mentioned roads. A good series of turf and dirt trails cover this area.

**PRAIRIE FACTS:** There are several prairie areas in the west half of Battle Creek. The smallest is a 2-acre native prairie opening in the oak woods. On the east side is a 40-acre prairie planted in 2000 with a Metropolitan Council Grant. This is a mesic prairie with big bluestem, indiangrass, and lots of forbs. The west end is a 12-acre prairie planted on the slopes overlooking Pt. Douglas Rd. The prairie was planted in 2002 with a National Park Service Grant as part of a larger oak savanna restoration.

**OTHER HABITATS:** This half of the park is a mixture of woodland and restored prairies. The woodland are a mixture of oak woods, oak savanna, maple basswood, and mixed species. There are extensive sandstone bluffs along the lower creek. There are several good vistas over looking the Mississippi River.